

CENTRE D'ARCHÉOLOGIE MÉDITERRANÉENNE  
DE L'ACADÉMIE POLONAISE DES SCIENCES

ÉTUDES et TRAVAUX  
XIX  
2001

TEODOZJA IZABELA RZEUSKA

*Pottery*  
*from the Temple of Tuthmosis III*  
*at Deir el Bahari*

## INTRODUCTION

The focus of this study is a group of 32 vessels and single sherds found in the area of the temple of Tuthmosis III and the rock-cut Tomb II situated above the temple at Deir el-Bahari. Most of the finds come from the excavations carried out in 1962–1967 by the Polish Centre of Warsaw University.<sup>1</sup> Some more fragments were discovered during further cleaning works in the temple area in 1983–1987. All of them are deposited in the SCA storeroom at Deir el-Bahari.

## DESCRIPTION AND CORPUS

All pots were drawn and described as follow: place of finding, fabric, firing, technique and base technique, surface treatment, colour, hardness and state of preservation.

Some of the vessels and sherds bear a temple inventory file number. Those with numbers starting with F. 1000, F. 5000, F. 6000, F. 7000 were found in the temple area in 1962–1967, finds with numbers starting with F. 8000 come from the cleaning works in 1983–1985. Temple sectors and layers could be established for some of the pottery based on this recording system.<sup>2</sup> The vessels and sherds without inventory numbers originated from a dump cleared from the temple area in 1986–1987. This assemblage contained some body sherds from earlier found vessels, cf. No. 6, allowing for a fuller reconstruction of this specific pot.

According to the so-called Vienna System<sup>3</sup> most of the vessels were made from Nile silts B1 and B2, six vessels or single sherds from Marl clay A4 and one sherd from Western Oases clay (?), that is outside the Vienna System. Firing is defined as oxidised when the break has no core and some organic material may have been present, and mixed when black or dark gray zone is observable in the section. Fabrics and firing are described based on fresh break analysis with a 7x magnifying hand lens. All pots are thrown on the wheel. Pot bases are cut (sliced from the wheel with a string), thrown (on the wheel), scraped (with a knife or any other tool) or made as a ring base. Any pre-firing coating is called slip, wash refers to any coating applied after firing. The surface may be left uncoated (i.e. without slip or wash) or wet smoothed. Descriptions of colours are taken from *Munsell's Soil Colour Charts*.<sup>4</sup> Sherd hardness was measured using a simplified Mohs' hardness scale: soft, medium hard and hard (1, 2, and 3 respectively on Mohs' scale). The state of

<sup>1</sup> J. LIPIŃSKA, *The Temple of Tuthmosis III. Statuary and Votive Monuments. Deir el-Bahari IV*, Warsaw 1984 [= *Deir el-Bahari IV*], p. 7; L. DĄBROWSKI, *Preliminary Report on the Reconstruction Works of Hatshepsut's Temple at Deir el-Bahari During the Seasons 1962/63 and 1963/64*, *ASAE LX*, 1968, pp. 1–7, Pls. I–VIII; J. LIPIŃSKA, *Preliminary Report on the Reconstruction Works of Hatshepsut's Temple at Deir el-Bahari During the Season 1964/65*, *ASAE LX*, 1968, pp. 142–143, Pls. V–VII.

<sup>2</sup> For dividing of the temple into the sectors cf. LIPIŃSKA, *Deir el-Bahari IV*, p. 9.

<sup>3</sup> H. Å. NORDSTRÖM and J. BOURRIAU, pp. 168–186, in: DO. ARNOLD, J. BOURRIAU, *An Introduction to Ancient Egyptian Pottery*, Mainz 1993 [= Introduction].

<sup>4</sup> MUNSELL, *Soil Colour Charts*, Baltimore 1994, Revised Edition.

preservation of incomplete pots has been estimated in degrees. The vessels are presented in a chronological order, divided into three principal periods: New Kingdom, Third Intermediate Period and Late Period.<sup>5</sup> The pottery dating was based on parallels from well-dated contexts found at other sites, especially in Upper Egypt. Parallels from Delta sites are included, but possible differences between pottery of Upper and Lower Egypt have been taken into account.<sup>6</sup>

## NEW KINGDOM

According to J. Bourriau the ceramics of the New Kingdom may be divided into four major phases.<sup>7</sup> The pottery in question represents the second (middle Eighteenth Dynasty), third (late Eighteenth Dynasty to early Nineteenth Dynasty) and fourth (late Nineteenth Dynasty to the end of the New Kingdom) phases.

### Middle Eighteenth Dynasty

**No. 1.** Rim. Probably tall jar with rounded base. See Fig. 1.

Inventory file number: F. 6237. Finding place: sector J6, level approximately 0–2 m above the temple pavement.

Marl clay A4. Firing: oxidised. Pot thrown on the wheel. Surface uncoated. Colour: 5 Y 8/3 pale yellow. Hard. Preservation: 100°. Rim diam.: 10 cm.

Painted decoration. Three horizontal bands under the rim. Two black bands flanking red one.

Compare: pots from Qurna now in the Egyptian Museum in Cairo CG 2748 = JE 28843 and CG 2750 = JE 28942;<sup>8</sup> pot made of Marl A4 from Hu.<sup>9</sup>

**No. 2.** Rim. Probably tall jar with rounded base. See Fig. 1.

Nile silt B1. Firing: oxidised. Pot thrown on the wheel. Surface uncoated, wet smoothed. Colour: 2,5 Y 8/2 pale yellow. Hard. Preservation: 60°. Rim diam.: 9 cm.

Painted decoration. Three horizontal bands under the rim. Topmost dark brown, middle band pale brown, lowest yellowish brown.

<sup>5</sup> Tomasz Górecki examined the Late Roman and Coptic Pottery.

<sup>6</sup> E.g. regional style workshop, accessible clay or silt material etc. Cf. M.R. BELL, Regional Variation in Polychrome Pottery of the 19th Dynasty, *CCE* 1, 1987, 49–76; C.A. HOPE, Some Memphite Blue-Painted Pottery of the Mid-18th Dynasty, in: *Ancient Egypt, the Aegean and the Near East. Studies in Honour of Martha Rhoads Bell*, ed. J. PHILLIPS, San Antonio 1997, [= Some Memphite], Fig. 10–11, pp. 249–286.

<sup>7</sup> J. BOURRIAU, Umm el-Ga'ab. Pottery from the Nile Valley before the Arab Conquest. Catalogue, Cambridge 1981 [= Umm el-Ga'ab], pp. 72–73.

<sup>8</sup> G. NAGÉL, Quelques représentations de chevaux sur des poteries du Nouvel Empire, *BIFAO* 30, 1930, Figs. 1–3; C. A. HOPE, Innovation in the Decoration of Ceramics in the Mid-18th Dynasty, *CCE* 1, 1987 [= Innovation], pp. 98 and 100, Pls. XXXII and XXXV, Fig. 1.

<sup>9</sup> Hu, grave Y 177, Fitzwilliam E. 202. 18099, cf. BOURRIAU, Umm el-Ga'ab, p. 77, No. 145; W. M. F. PETRIE, G. BRUNTON, *Sedment II*, London 1924, Pl. LXIV, 23 Y.



**No. 3.** Body sherd (shoulder?). Probably ovoid jar with a rounded base. See Fig. 1.

Inventory file number: F. 6109. Finding place: sector K7, level 0–0.5 m above the temple pavement. Nile silt B1. Firing: oxidised. Pot thrown on the wheel. Surface uncoated. Colour: 5 YR 7/4 pink. Hard. Ht.: 8 + x cm.

Painted decoration. A red horizontal band overlaid with black dots flanked by black bands flanked by red bands.

**No. 4.** Body sherd (shoulder?). Probably ovoid jar with rounded base. See Fig. 1.

Nile silt B1 with limestone particles. Firing: oxidised. Pot thrown on the wheel. Surface slipped. Colour: 10 YR 6/4 light yellowish brown (slip). Hard. Ht.: 6.2 + x cm.

Painted decoration. Six reddish brown horizontal lines overlaid with black dots. One vertical thick and wavy reddish brown band.

Parallels to No. 3 and No. 4: ovoid jar with rounded base, made of Nile silt from the Temple of Hatshepsut (Deir el-Bahari),<sup>10</sup> ovoid pot dated to the early Eighteenth Dynasty Dra' Abu el-Naga,<sup>11</sup> one pot made of Nile silt and three vessels of compact marl clay with inorganic tempers from the time of Tuthmosis III – Tuthmosis IV from the Temple of Seti I (Gurna),<sup>12</sup> ovoid jar<sup>13</sup> and sherd with this type of decoration<sup>14</sup> from Temple of Tuthmosis IV (Gurna), pot made of Nile silt I a-b, white washed (?) on the exterior, red and brown decoration from the tomb of Paenkhemu (TT 68),<sup>15</sup> two sherds made of Nile silt from the Tomb of Nefersecheru (TT 296)<sup>16</sup> and Thebes (TT 80);<sup>17</sup> round based necked jars with dots decoration from Sudanese Nubia,<sup>18</sup> vessel made of Upper Egypt marl clay, fired very hard, dated to the middle Eighteenth Dynasty, time of Tuthmosis III from Tell el-Da'ba.<sup>19</sup>

**No. 5.** Body sherd (neck?). See Fig. 2.

Nile silt B1. Firing: oxidised. Pot thrown on the wheel. Surface uncoated. Colour: 10 YR 8/2 very pale brown. Medium hard. Ht.: 8.3 + x cm.

<sup>10</sup> Z. E. SZAFRAŃSKI, Pottery from the Time of Construction of the Hatshepsut Temple, *DE* 22, 1992, pp. 54–55, No. 9.

<sup>11</sup> A. SEILER, Archäologisch faßbare Kultpraktiken in Grabkontexten der frühen 18. Dynastie in Dra' Abu el-Naga/Theben, in: *Thebanische Beamtennekropolen*, ed. by J. ASSMANN *et al.*, SAGA 12 [= Kultpraktiken], Heidelberg 1995, Abb. 3.

<sup>12</sup> K. MYŚLIWIEC, Keramik und Kleinfunde aus der Grabung im Thempel Sethos I in Gurna, *AV* 57, Mainz am Rhein 1987 [= Keramik u. Kleinfunde], pp. 33–5, Nr. 28, 31–33.

<sup>13</sup> M. C. GUIDOTTI, Ceramica dipinta dell'epoca di Tutmosi IV a Gurna, *EVO* IV, 1981, p. 99, Fig. 9.

<sup>14</sup> M. C. GUIDOTTI, La ceramica della tomba '79 a Gurna, *EVO* VIII, 1985, p. 27, Fig. 9, No. T 79 458.

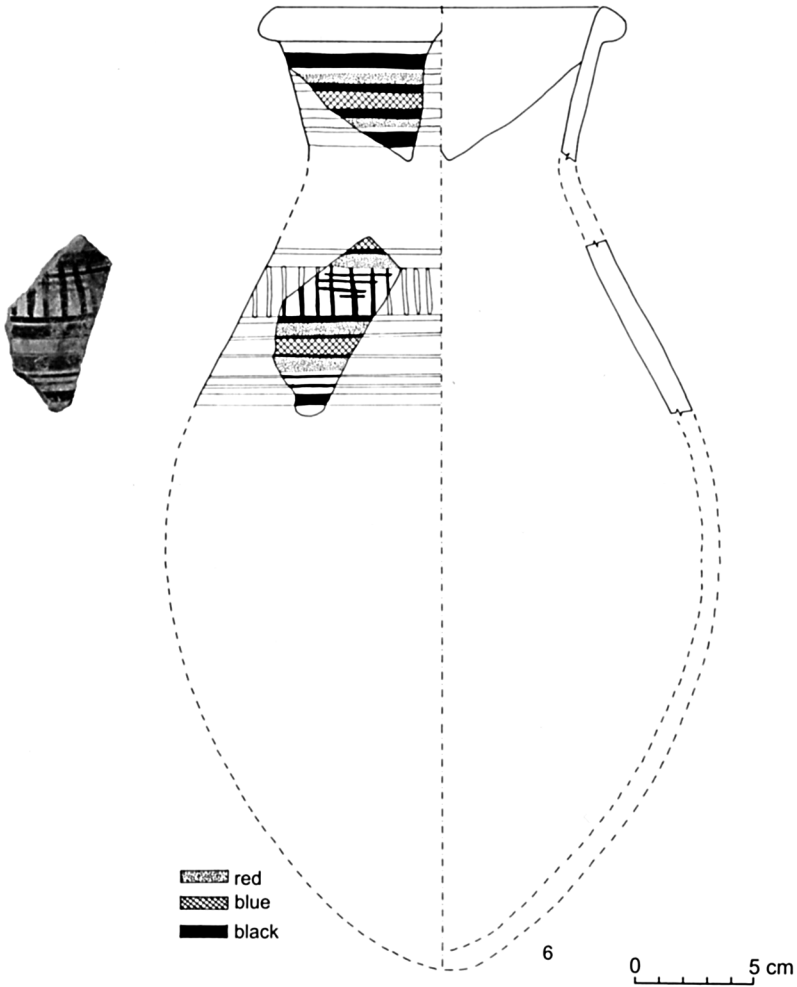
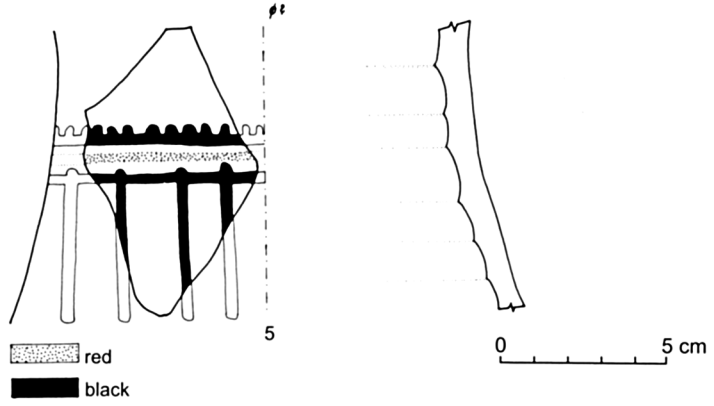
<sup>15</sup> Probably B1 in "Vienna System". K.-J. SEYFRIED, Das Grab des Paenkhemenu (TT 68) und die Anlage TT 227, Mainz am Rhein 1991, p. 105, Nr. 18.

<sup>16</sup> E. FEUCHT, Das Grab des Nefersecheru (TT 296), Mainz am Rhein 1985, Pl. LXV, Nr. 173 and 213.

<sup>17</sup> A. G. SHEDID, Stil der Grabmalereien in der Amenophis' II, Mainz 1988, p.188, Nr. 80/31.

<sup>18</sup> Decorative treatments types 3D and 4D, cf.: R. HOLTHOER, New Kingdom Pharaonic Sites. The Pottery. The Scandinavian Joint Expedition to Sudanese Nubia 5:1, Lund 1977 [= NK Pottery], pp. 165 f., Pls. 66. 4 and 6.

<sup>19</sup> I. HEIN, 'Ezbet Helmi – Tell el-Da'ba. Chronological Aspects of Pottery, in: *Proceedings of the Seventh International Congress of Egyptologists*, ed. C. J. EYRE, OLA 82, Leuven 1998, p. 549 f., Fig. 1, No. 8205U.



2. Pottery of the middle Eighteenth Dynasty.

Painted decoration. Red vertical line flanked by black vertical lines. The uppermost lines overlaid with small black dots. Black vertical strokes. The whole pattern has not been preserved.

**No. 6.** Rim and body sherd. Probably jar with rounded base. See Fig. 2.

Inventory file number of rim: F. 1715. Marl clay A4. Firing: oxidised. Pot thrown on the wheel. Surface uncoated. Colour: 10 YR 8/3 very pale brown. Hard. Preservation: 70°. Rim diam.: 14 cm.

Painted decoration. Red, blue and black horizontal bands painted alternately. Vertical black strokes on body.

Parallel: Cairo Museum 12073 = CG 2672.<sup>20</sup>

**No. 7.** Base of a plate. See Fig. 3.

Nile silt B2. Firing: oxidised. Pot thrown on the wheel. Base cut. Surface uncoated. Colour: 7,5 YR 6/4 light brown. Medium hard. Preservation: 180°. Base diam.: 4.8 cm.

Traces of pigments (white, blue, green and black) on the interior surface of the pot.

**No. 8.** Bowl. See Fig. 3.

Nile silt B1. Firing: oxidised. Pot thrown on the wheel. Surface uncoated. Colour: 10 R 6/4 pale red. Hard. Preservation: 70°. Rim diam.: 13 cm.

The interior surface is covered with yellow and blue pigments.

Parallels to No. 9 and No. 10: pots and painter's utensils from Dra' Abu el-Naga<sup>21</sup> and Tomb of Tjanuni (TT 74).<sup>22</sup>

**No. 9.** Cup. See Fig. 3.

Inventory file number: F. 6046. Finding place: sector K7, level 1.5 m above pavement. Nile silt B2. Firing: mixed. Pot thrown on the wheel. Base scraped. Surface on the exterior red slipped, interior uncoated. Colour: 7,5 R 5/6 red (slip). Hard. Preservation: upper part of pot missing. Ht.: 9 + x cm. Max. body diam.: 5.8 cm.

**No. 10.** Cup. See Fig. 3.

Inventory file number: F. 8347. Finding place: sector G 8. Nile silt B2. Firing: oxidised. Pot thrown on the wheel. Base scraped. Surface on the exterior red slipped, interior uncoated. Colour: 7,5 R 5/6 red (slip). Hard. Preservation: upper part of pot missing.

Parallels to No. 11 and No. 12: "Becher" with red painted rim, dated to the early Eighteenth Dynasty from Dra' Abu el-Naga,<sup>23</sup> pots described as a wine-decanter from Sudanese Nubia.<sup>24</sup> Ht.: 11.3 + x cm. Max. body diam.: 5.8 cm.

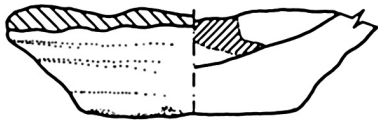
<sup>20</sup> HOPE, *Innovation*, p. 99, Pl. XXIII.

<sup>21</sup> SEILER, *Kultpraktiken*, Abb. 1; POLZ, *An Egyptian Painter's Utensils*, pp. 34 f.

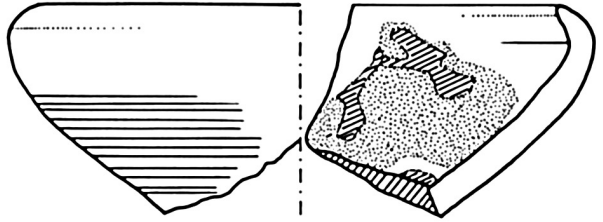
<sup>22</sup> A. and A. BRACK, *Das Grab des Tjanuni*. Theben Nr. 74, Mainz 1977, p. 80, Nr. 5/29 and 5/2, Taf. 57c, d.

<sup>23</sup> SEILER, *Kultpraktiken*, Abb. 2.

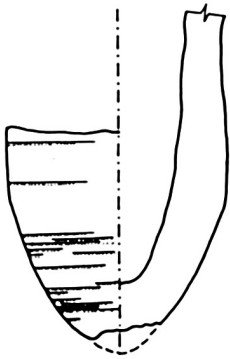
<sup>24</sup> HOLTHOER, *NK Pottery*, p. 173, Pl. 41.



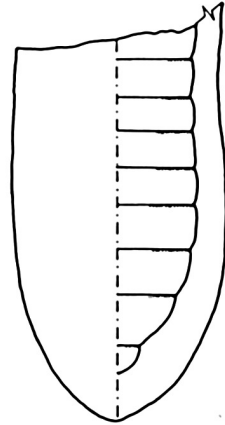
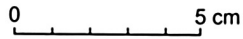
7



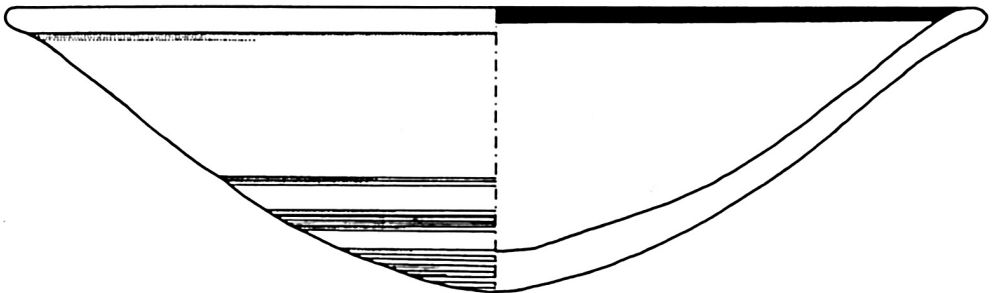
8



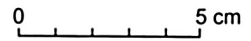
9



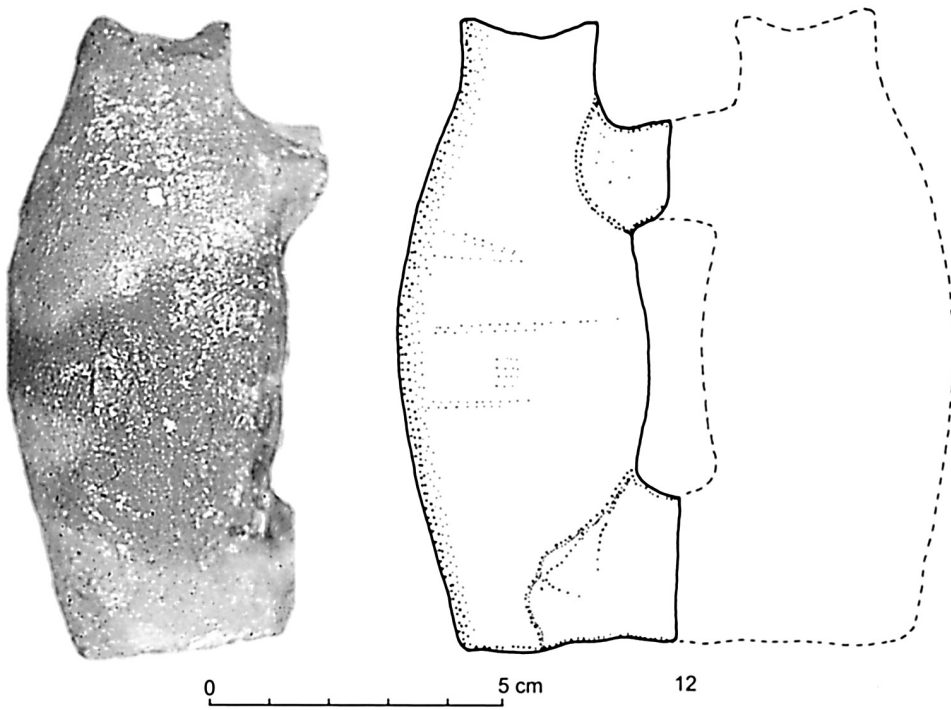
10



11



3. Eighteenth Dynasty Pottery.



4. Votive or cult vessel No. 12. Probably first half of Eighteenth Dynasty.

**No. 11** .Plate with rounded base. See Fig. 3.

Inventory file number: F. 6418. Finding place: sector J6, level of temple pavement. Nile silt B2. Firing: oxidised. Pot thrown on the wheel. Base thrown. Surface uncoated. Colour: 10 R 6/6 light red (exterior) 10 R 5/4 weak red (interior). Hard. Preservation: complete. Rim diam.: 26–27 cm. Ht.: 7.7 cm.

Red painted rim on the interior (10 R 4/6 red).

Parallels: plates from Deir el-Medina.<sup>25</sup>

**No. 12.** Vessel. See Fig. 4.

Inventory file number: F. 5664. Finding place: sector G6, level 2–3 m above the temple pavement. Nile silt B1. Firing: oxidised and mixed. Pot thrown on the wheel with hand formed elements joining two(?) vessels. Surface uncoated. Colour: 10 R 5/6 red. Medium hard. Preservation: missing rim. Ht.: 10.6 + x cm. Max. body diam.: 4.2 cm.

<sup>25</sup> G. NAGÉL, *La céramique du Nouvel Empire à Deir el Médineh*, DFIFAO 10, Le Caire 1938 [= *La céramique*], p. 4, fig. 2, n° 109; p. 41, Fig. 26, No. 149; p. 43, Fig. 27, Nos. 159; 165.

Parallels: Deir el-Bahari,<sup>26</sup> Deir el-Medina,<sup>27</sup> Esna.<sup>28</sup>

### Late Eighteenth Dynasty to early Nineteenth Dynasty

**No.13.** Ovoid jar, probably with a rounded base. See Fig. 5 and Fig. 6.

Inventory file number: F. 6298 A/B, F. 6074, F. 6327 A/B, F. 6421. Finding place: various sectors of the temple – sector J6 in pavement and 0–2 m above it, sector K7 in meter thick layer above the pavement. Nile silt B1. Firing: oxidised. Pot thrown on the wheel. Surface cream slipped. Colour: 7,5 YR 8/4 pink. Medium hard. Ht.: 16.6 + x cm. Max. body diam.: 14.8 cm.

Painted decoration in red and blue. Some outlines and details in dark brown or black. 10 alternately red and blue horizontal bands with overlaid pattern of petals tapering downwards on the neck. A frieze of widely spaced papyrus umbels on vertical culms of different heights growing from a blue band symbolising probably water around the vessel. All plants painted separately, not in clumps. Each stem surrounded at the bottom with red painted young (?) leaves. Blue and red bands framing the bottom edge of the central panel.

Parallels: vessel (No. M.P. 602) from East Karnak,<sup>29</sup> vessel of probable Amarna provenance deposited in the Louvre (No. E11.265, cream coated Nile silt A3),<sup>30</sup> a vessel from Sedment\* and vessel from Giza from Cairo Museum (JE 48180).<sup>31</sup>

**No. 14.** Body sherd. Amphora? Cover? Funnel necked jar? See Fig. 7.

Nile silt B2. Firing: mixed. Pot thrown on the wheel. Surface cream slipped. Colour: 7.5 YR 7/4 pink. Hard. Ht.: 11 + x cm.

Painted decoration. Large petals of blue lotus(?) outlined in black.

Parallels: vessel (No. 12570) from Amarna deposited in the Museum für Kunsthandwerk in Frankfurt,<sup>32</sup> and vessel (E14369a–b) on unknown provenance from the University Museum in Philadelphia.<sup>33</sup>

<sup>26</sup> E. NAVILLE, *The XIth Dynasty Temple at Deir el-Bahari III*, EEF Exc.Mem. 32, London 1913, Pl. XXIII, No. 1 [= *The XIth Dynasty Temple*].

<sup>27</sup> NAGÉL, *La céramique*, p. 61, fig. 44, n° 17.

<sup>28</sup> D. DOWNES, *The Excavations at Esna 1905–1906*, Warminster 1974, 1974, No. 150, p. 47 f. The pot was found in the tomb 150 dated to the Second Intermediate Period, but the material seems to be mixed since a broken scarab of Tuthmosis III was found there as well.

<sup>29</sup> E. K. WERNER, *A Fragmentary Blue-Painted Vase from East Karnak*, *The SSEA Journal* XIII/4, 1983, p. 225, Fig. 1.

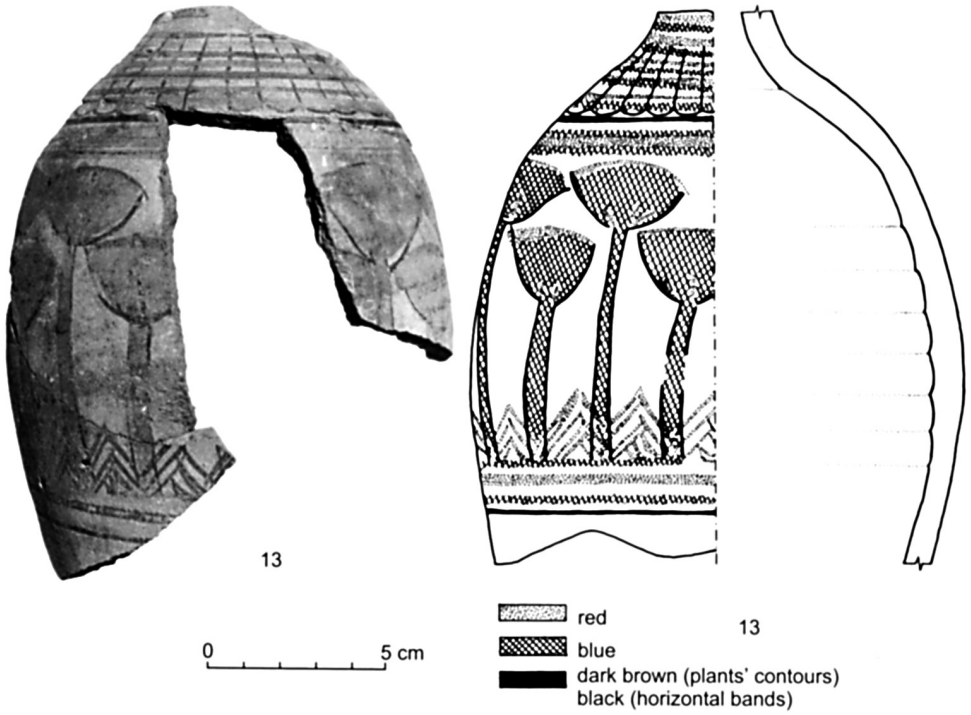
<sup>30</sup> C. A. HOPE, *Blue-Painted and Polychrome Decorated Pottery from Amarna*, *CCE* 2, 1991 [= *Blue Painted from Amarna*], p. 51, Pl. 21 b-c. The fabric is similar to the Nile silt C in Vienna System.

\* W.M.F. PIETRE, G. BRUNTON, *Sedment II*, London 1924, Pl. LXII, No. 115.

<sup>31</sup> C. A. HOPE, *Some Memphite*, Fig. 10–11.

<sup>32</sup> HOPE, *Blue-Painted from Amarna*, p. 39, Pl. 5d.

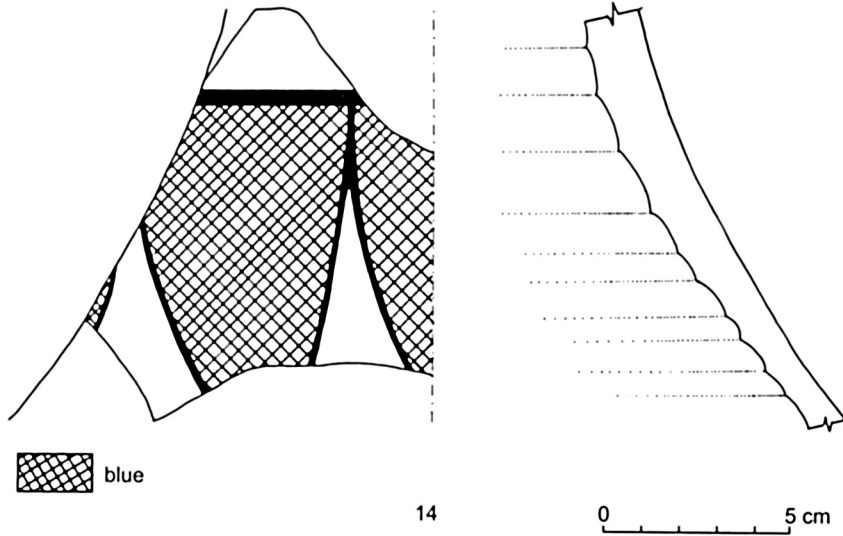
<sup>33</sup> *Egypt's Golden Age: The Art of Living in the New Kingdom 1558–1085 B.C.*, Catalogue of the Exhibition in the Museum of Fine Arts, Boston, February 3–May 2, 1982, [= *Egypt's Golden Age*], pp. 91–92, No. 71.



5. Vessel No. 13. Blue Painted on Cream Slipped. Late Eighteenth to early Nineteenth Dynasty.



6. Vessel No. 13. Fragments.



7. Vessel No. 14. Blue Painted on Cream Slipped. Late Eighteenth to early Nineteenth Dynasty.

### Late Nineteenth Dynasty to the end of the New Kingdom

**No. 15.** Rim and two body sherds. Probably globular or biconical jar. See Fig. 8. Nile silt B2. Firing: oxidised. Pot thrown on the wheel. Surface blue painted on red slipped.<sup>34</sup> Hard. Preservation: 60°. Rim diam.: 12 cm.

Decoration. The rim painted black. Under the rim two broad panels red and blue, separated by a thin black line. Vertical blue strokes on the red band. On the body sherds, the same “red-and-blue” pattern, but without the vertical elements.

Parallels: body sherd with the same schema of decoration from Ain Asil (Dakhla Oasis),<sup>35</sup> complete vessel (No. 30912) from the Field Museum of Natural History in Chicago<sup>36</sup> and a vessel (No. E. 6820) from the Musées Royaux d’Art et Histoire in Brussels.<sup>37</sup>

**No. 16.** Neck sherd of amphoriskos. See Fig. 9.

Western Oases clay(?).<sup>38</sup> Firing: mixed. Pot thrown on the wheel. Surface cream slipped (?).

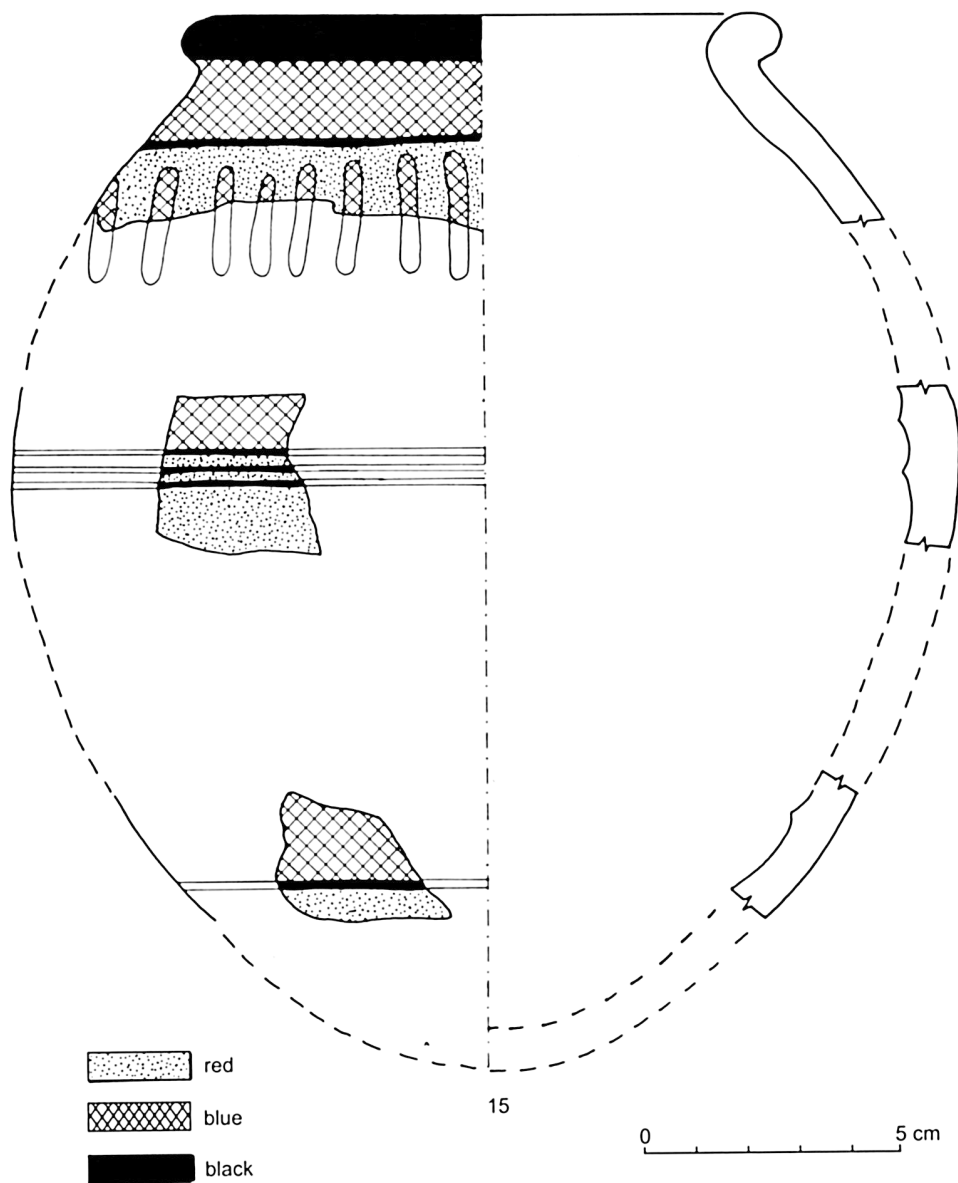
<sup>34</sup> Blue-Painted Red-Coated Nile Silt, cf. C.A. HOPE, *Pottery of the Egyptian New Kingdom: Three Studies*. Victoria College, Archaeology Research Unit Occasional Paper No. 2, Burwood Victoria 1989, [= *Three Studies*], p. 11. ID., *Concerning a Blue-Painted Vessel*, *The SSEA Journal* XV/3, 1985, p. 79 with quoted parallels.

<sup>35</sup> S. MARCHAND, P. TALLET, *Ayn Asil et l’Oasis de Dakhla au Nouvell Empire*, *BIFAO* 99, 1999, [= *Ayn Asil*], pp. 323 f., Fig. 32 a-b.

<sup>36</sup> *Egypt’s Golden Age* p. 97, No. 79.

<sup>37</sup> Thanks are due to Dr J. Aksamit for pointing out this parallel to me.

<sup>38</sup> This clay probably is equal with the local clay FIG from Ayn Asil cf.: MARCHAND and TALLET, *Ayn Asil*, pp. 355–356 and the fabric group V: clays from Dakhla Oasis, cf. D. A. ASTON, *Die Keramik des Grabungsplatzes Q1. Teil 1 Corpus of Fabrics, Wares and Shapes*, Mainz 1998 [= *Die Keramik*], p. 73.



8. Vessel No. 15. Blue Painted on Red Slipped. Probably Nineteenth or Twentieth Dynasty.

Colour: 5 YR 7/3 pink. Hard. Painted decoration. Two black vertical bands. The interior surface covered with a black resin-like substance and blue pigment. On the exterior surface, traces of a black substance. Ht.: 9.1 + x cm.

Parallels to No.16: two necks of amphoriskoi made of lokal clay from Ayn Asil (Dakhla Oasis),<sup>39</sup> four neck sherds from Valley of the Kings (Tomb of Ramesses VI KV 9),<sup>40</sup> three pots from Qantir.<sup>41</sup>

**No. 17.** Ovoid sherd reused as tool. Probably neck sherd of amphora. See Fig. 9. Marl clay A4(?). Surface eroded. Colour: 10 YR 8/2 very pale brown. Hard. Ht.: 9 cm., Max. body diam.: 8 cm.

Painted decoration. One black band.

**No. 18.** Beer jar. See Fig. 9.

Inventory file number: F. 6261. Finding place: sectors H5–H6, level 2.5–3.8 m above the temple pavement. Nile silt B2. Firing: mixed. Pot thrown on the wheel. Base cut. Surface uncoated. Colour: 7,5 R 5/6 red. Hard. Preservation: missing fragment of rim. Rim diam.: 9.2 cm. Ht.: 18.4 cm. Max. body diam.: 13.5 cm.

Parallels: pots made of fine Nile silt NKS1, uncoated, dated to the New Kingdom – Third Intermediate Period from Theban Necropolis (TT 294, 253, 254),<sup>42</sup> vessels made of light fired Nile silt from the foundation deposit of the Seti I temple (Gurna),<sup>43</sup> Ramesseum,<sup>44</sup> ordinary “beer bottles” type BB4 Sudanese Nubia.<sup>45</sup>

### THIRD INTERMEDIATE PERIOD

**No. 19.** Jar with rounded base. See Fig. 10.

Inventory file number: F. 8090. Finding place: sector H7. Nile silt B2. Pot thrown on the wheel. Base thrown. Surface uncoated. Colour: 10 R 6/4 pale red. Hard. Complete. Rim diam.: 9.4 cm. Ht.: 29.4 cm. Max. body diam.: 11 cm.

**No. 20.** Jar. See Fig. 11.

Inventory file number: F. 7802. Nile silt B1. Firing: oxidised. Pot thrown on the wheel.

<sup>39</sup> MARCHAND, TALLET, Ayn Asil, Fig. 11 c-d.

<sup>40</sup> D. A. ASTON, B. ASTON, E. C. BROCK, Pottery from the Valley of the Kings-Tombs of Merenptah, Ramesses III, Ramesses IV, Ramesses VI and Ramesses VII, *ÄL VIII*, 1998, p. 160, No. 318, Pl. 37; D.A. ASTON, Two Decorative Styles of the Twentieth Dynasty, *CCE 3*, 1992, p. 76, Fig. 4.

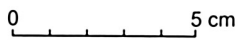
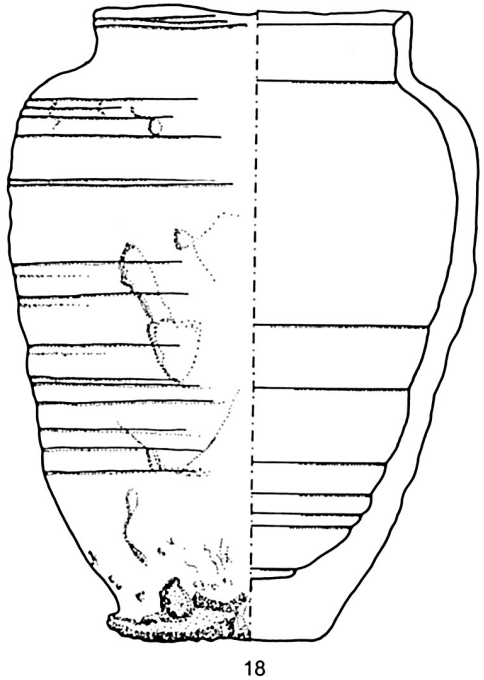
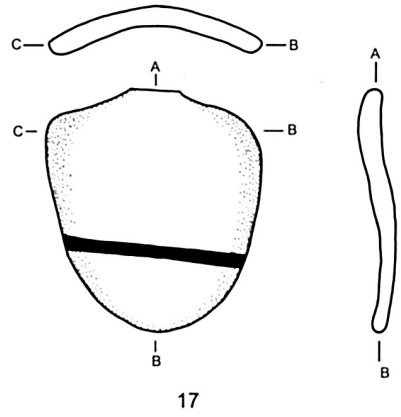
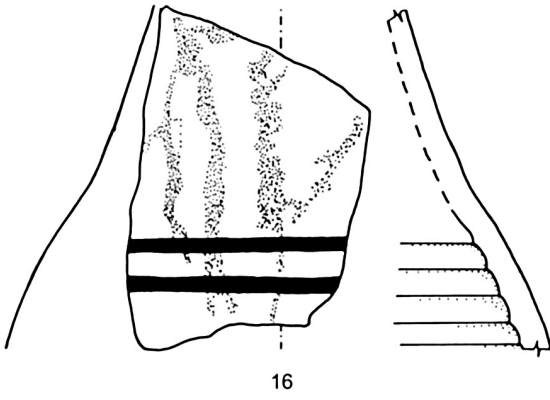
<sup>41</sup> ASTON, *Die Keramik*, 538, Nos. 2208, 2215, 2216.

<sup>42</sup> P. ROSE, The Pottery, in: N. STRUDWICK, H. STRUDWICK, The Tomb of Amenhotep, Khnummose and Amenmose at Thebes (Nos. 294, 253 and 254), Oxford 1996 [= Pottery], p. 168, Pl. 63, No. 49.

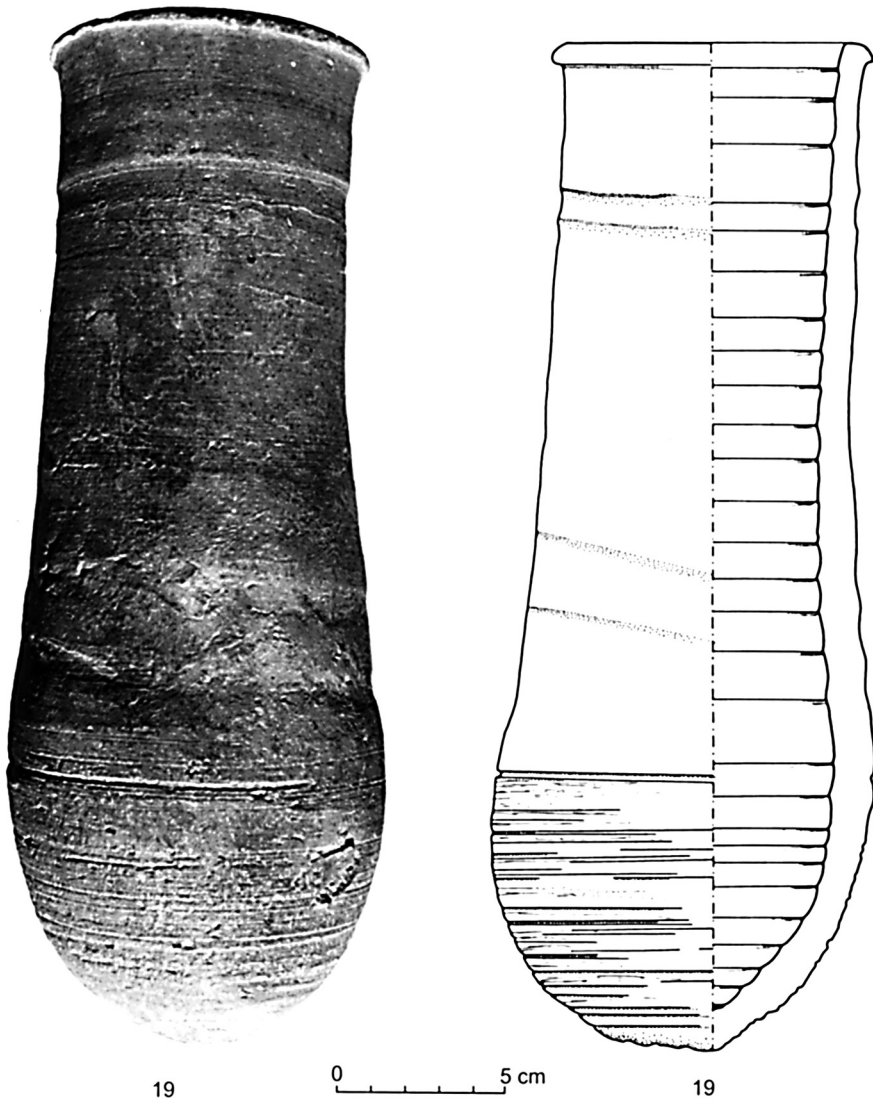
<sup>43</sup> K. MYŚLIWIEC, in: R. STADELMANN, K. MYŚLIWIEC, Der Tempel Sethos I. in Qurna, *MDAIK 38*, 1982, Pl. 2. i.

<sup>44</sup> G. LECUYOT, La céramique du Ramesseum. Étude préliminaire, *Memnonia IV-V*, 1993-1994 [= Céramique du Ramesseum], p. 106, fig. 2p.

<sup>45</sup> HOLTHOER, NK Pottery, p. 87 f., Pl. 18. According to Holthoer this type of jar was very common during the New Kingdom.



9. Late Nineteenth Dynasty to the end of the New Kingdom.

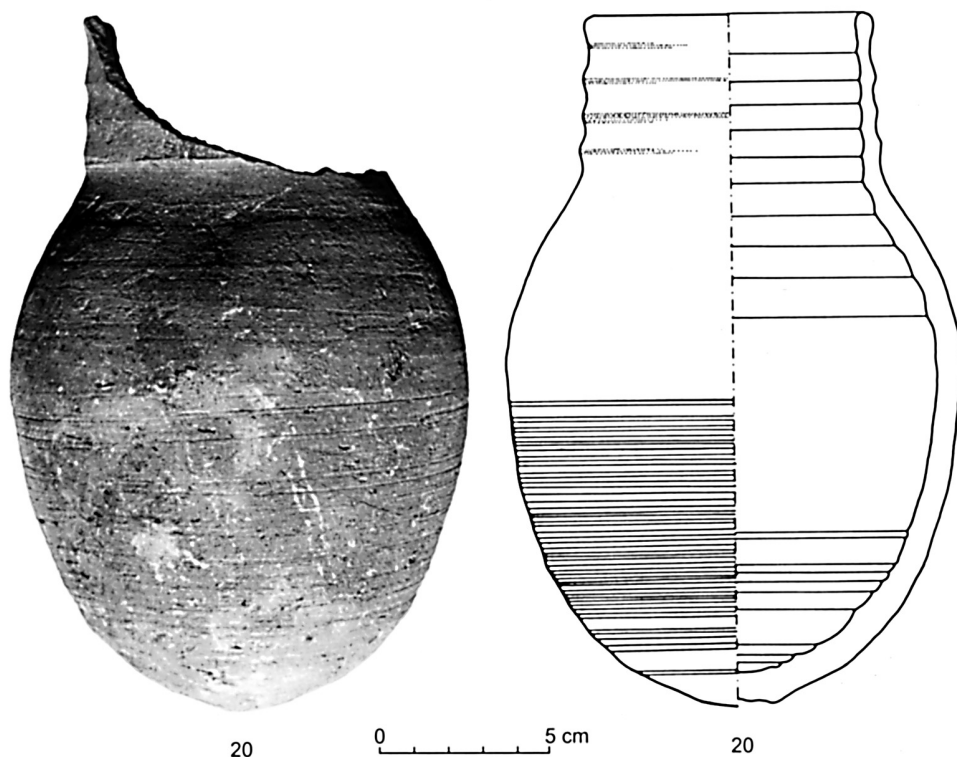


10. Vessel No. 19. Probably Third Intermediate Period.

Base thrown. Surface uncoated. Colour: 7,5 R 5/4 weak red. Hard. Preservation: missing small fragment of rim. Rim diam.: 8 cm. Ht.: 20 cm. Max. body diam.: 13.2 cm.

**No. 21.** Bottom. See Fig. 12.

Inventory file number: F. 6938. Marl clay A4. Firing: oxidised. Pot thrown on the wheel. Ring base. Surface uncoated. Colour: exterior 2,5 Y 8/2 pale yellow, interior 5 YR 7/4 pink. Hard. Preservation: 360°. Base diam. 4.8 cm. Ht.: 7.6 + x cm.



11. Vessel No. 20. Third Intermediate Period.

Painted decoration. Two brown horizontal bands.

Parallels: lower part of a similar pot, but made of a different fabric, i.e. “pâte LIII” from Tôd.<sup>46</sup>

**No. 22.** Lid. See Fig. 12.

Inventory file number: F. 6632. Finding place: Tomb II. Nile silt B1 sandy. Pot thrown on the wheel. Surface slipped. Colour: 2,5 Y 8/2 pale yellow. Hard. Complete. Ht.: 3.7 cm. Max. body diam.: 7.4 cm.

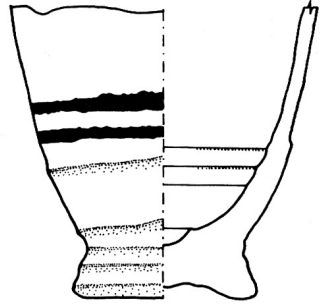
Parallels: pot made of Silt ware NKS1, uncoated, dated to the New Kingdom – Third Intermediate Period from Theban Necropolis (TT 294, 253 and 254).<sup>47</sup>

<sup>46</sup> Not Marl clay A4 but Nile silt with organic inclusions, probably Nile B2 or C in “Vienna System”. G. PIERRAT-BONNEFOIS, *La céramique dynastique et ptolémaïque des fouilles du Louvre à Tôd*, CCE 6, 2000 [= *Céramique dynastique*], p. 317, fig. 165.

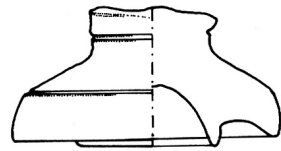
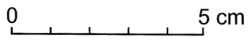
<sup>47</sup> ROSE, *Pottery*, 172, Pl. 69, No. 146.



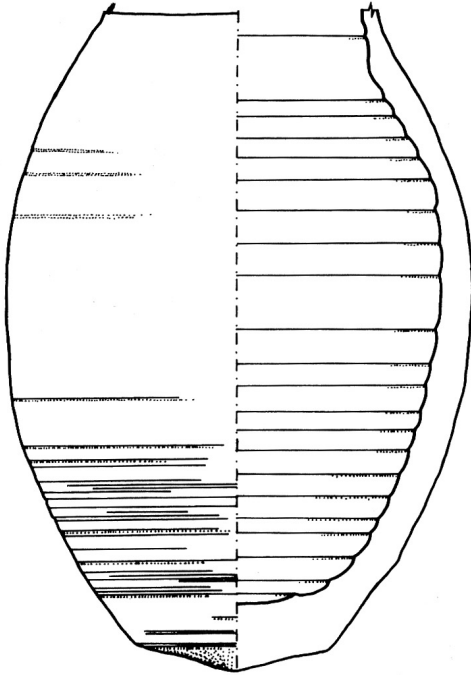
21



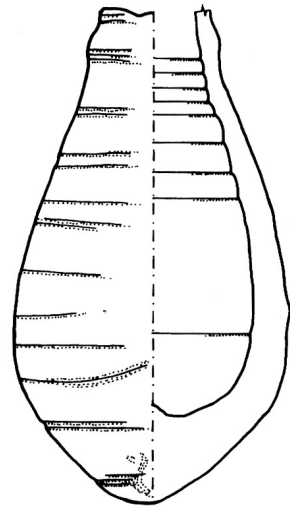
21



22



23



24

12. Third Intermediate Period pottery.

**No. 23.** Jar with rounded base. See Fig. 12.

Inventory file number: F. 7691. Nile silt B1. Firing: oxidised. Pot thrown on the wheel. Base thrown. Surface uncoated. Colour: 5 YR 5/4 reddish brown. Hard. Preservation: missing rim. Ht.: 17.2 + x cm. Max. body diam.: 12.4 cm.

**No. 24.** Drop-shaped pot. See Fig. 12.

Inventory file number: F. 6610. Finding place: sectors I 4/5/6, level 1.5–2.7 m. Nile silt B1 sandy. Firing: oxidised. Pot thrown on the wheel. Base thrown. The pot was probably thrown in two parts that were later joined. Surface uncoated. Colour: 10 R 5/6 red. Hard. Preservation: missing rim. Ht. 12.8 + x cm. Max. body diam.: 7.1 cm.

Parallels: pot of this type described as typical for Upper Egypt at the time 400–250 B.C. from El-Kab,<sup>48</sup> Gurna, dated to 23th–26th Dynasty,<sup>49</sup> pot made of Marl fabric LPM1, uncoated, dated to the Late Period from Theban Necropolis (TT Nos. 294, 253 and 254).<sup>50</sup>

**No. 25.** Plate. See Fig. 13.

Inventory file number: F. 7131. Finding place: sector H6, level 0–1.5 m. Marl clay A4. Firing: oxidised. Pot thrown on the wheel. Base thrown. Surface uncoated. Colour: 5 YR 7/4 pink. Hard. Preservation: 95°. Rim diam.: 26 cm. ht.: 7.8 + x cm.

Parallels: pot made of Nile silt and dated to the second half of Seventh Century B.C. from the Temple of Seti I (Gurna)<sup>51</sup> pot of similar shape, but made of different fabric LIII from Töd.<sup>52</sup>

**No. 26.** Bowl with inverted lip. See Fig. 13.

Inventory file number: F. 8005. Finding place: sector G4, level 0–1.5 m. Nile silt B1. Pot thrown on the wheel. Base thrown. Surface uncoated. Colour: 10R 5/6 light red. Hard. Complete. Rim diam.: 21.5 cm., Ht.: 11.1 cm. Inner surface and on the exterior covered with black substance (resin?).

Parallels: pot from Gournet Mar<sup>c</sup>ei dated to Nineteenth or Twentieth Dynasty,<sup>53</sup> pot made of Nile B2 but red slipped inside and uncoated outside, dated to the Libyan Period from Elephantine.<sup>54</sup>

<sup>48</sup> S. HENDRICKX, D. HUYGE, El-Kab. Tombes rupestres, *BdL* XX, 1999, pp. 39–40, fig. 5, n° P. 191.

<sup>49</sup> W.M.F. PETRIE, Qurnch, London 1909, Pl. 50, Nos. 840–841.

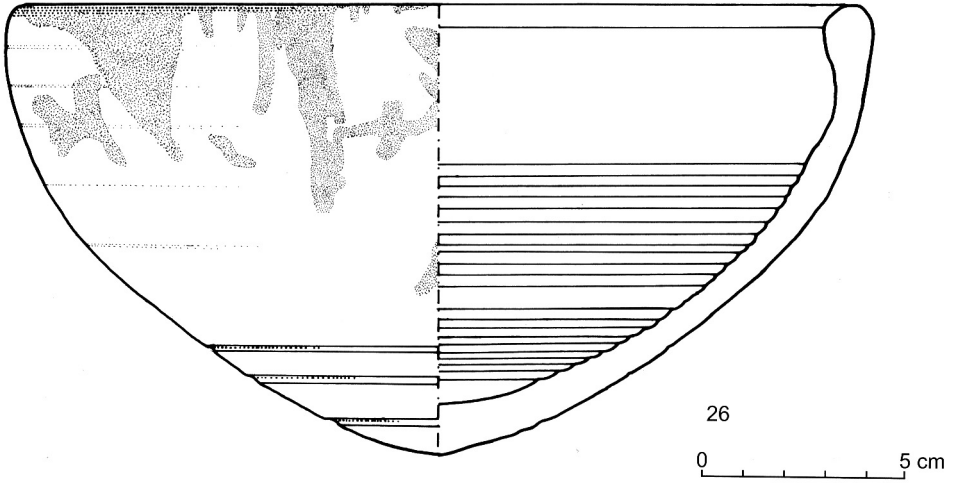
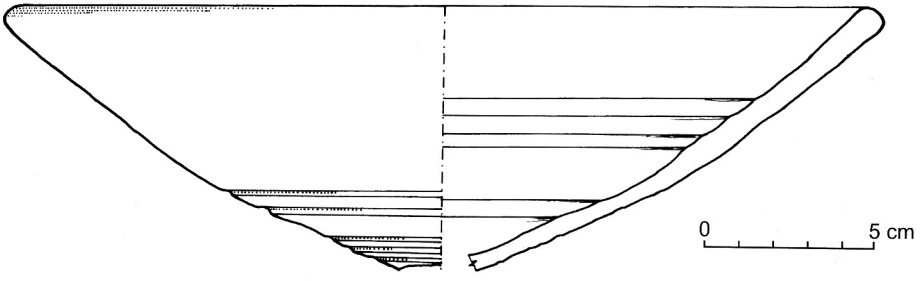
<sup>50</sup> ROSE, Pottery. p. 172, Pl. 69, No. 146.

<sup>51</sup> MYŚLIWIEC, Keramik und Kleinfunde, pp. 58f., No. 383; cf. D. A. ASTON, Egyptian Pottery of the Late New Kingdom and Third Intermediate Period (Twelfth – Seventh Centuries B.C.). Tentative Footsteps in a Forbidding Terrain, SAGA 13, Heidelberg 1996 [= SAGA 13], p. 48.

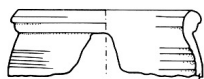
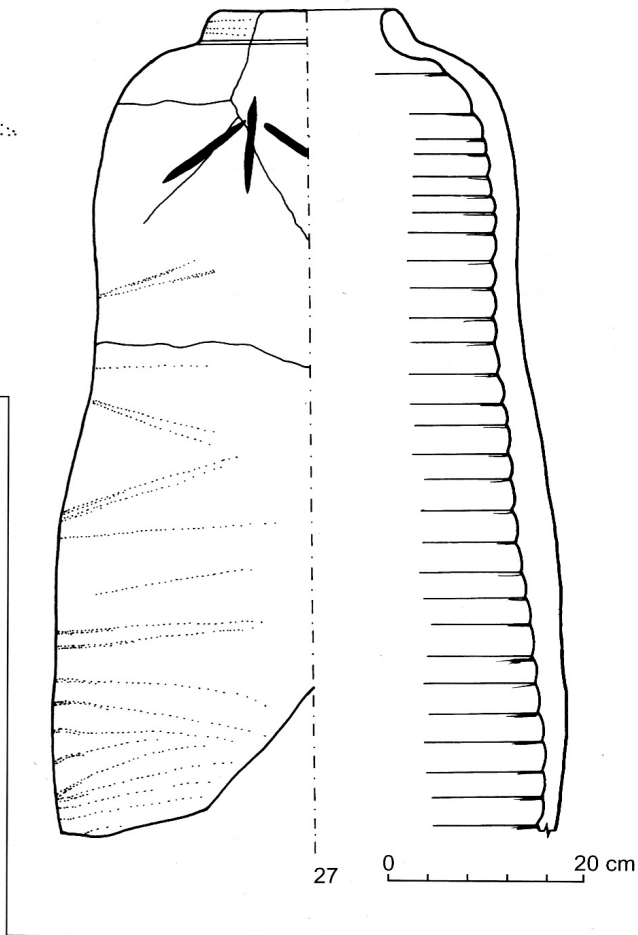
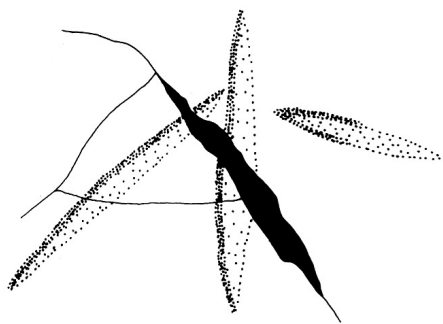
<sup>52</sup> PIERRAT-BONNEFOIS, Céramique dynastique, p. 313, fig. 135.

<sup>53</sup> G. CASTEL, D. MEEKS, Deir el-Médineh 1970, Fasc. I, Gournet Mar<sup>c</sup>ei Nord, FIFAO XII/1, Le Caire 1980, pp. 27–28, Pl. XII a, b, No. 15.

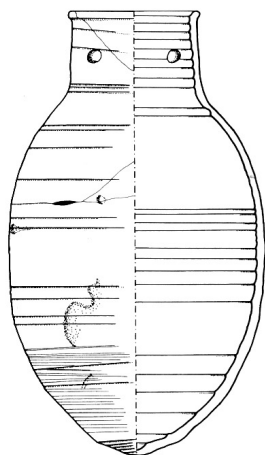
<sup>54</sup> ASTON, Elephantine XIX, 122, Pl. 35, No. 1082.



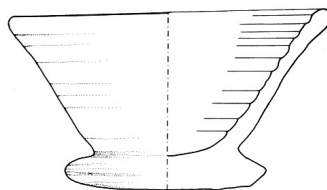
13. Third Intermediate Period pottery.



28



29



30

0 10 cm

14. Late Period pottery. Probably late 25th or early 26th Dynasty.

## LATE PERIOD

**No. 27.** Jar for embalming remains. See Fig. 14.

Inventory file number: F. 8982B. Finding place: sector F4, near to the cliff. Nile silt B2. Firing: oxidised and mixed where wall thicker. Pot thrown on the wheel. Surface on the exterior white washed, interior uncoated. Colour: 10 R 6/6 light red. Hard. Preservation: 270°. Rim diam.: 9 cm. Ht.: 45 cm.

Pot mark (three strokes) in upper part, incised in the wet clay.

Compare: three pots made of Nile silt from the Temple of Seti I (Gurna)<sup>55</sup> and another pots from Gurna with the same pot mark dated to the 22nd Dynasty,<sup>56</sup> pot made of Nile silt from Tomb of Nefersecheru (TT 296),<sup>57</sup> a pot made of “pâte L IV (rouge, assez grossière)”, dated to the Third Intermediate Period (22nd–25th Dynasty) from the necropolis in the temple temenos in Ramesseum,<sup>58</sup> pot dated to the 26th Dynasty from Assasif.<sup>59</sup>

**No. 28.** Rim. See Fig. 14.

Marl clay A4(?). Firing: oxidised. Pot thrown on the wheel. Surface exterior wet smoothed, interior uncoated. Colour: 2,5 Y 7/4 pale yellow. Hard. Preservation: 75°. Rim diam.: 9.6 cm.

Parallel: pot of similar shape, but bigger (rim. 12.4 cm.) made of silt clay, red slipped and dated to the 25th Dynasty from Saqqara.<sup>60</sup>

**No. 29.** Jar. See Fig. 14 and Fig. 15.

Inventory file number: F. 8921. Finding place: sector G7. Marl clay A4(?). Firing: oxidised. Pot thrown on the wheel. Base thrown. Surface uncoated. Colour: 5 YR 7/3 pink. Hard. Preservation: 210°. Rim diam.: 6.7 cm. Ht.: 23.4 cm. Max. body diam.: 12.9 cm.

Hole in the neck made before firing. At the moment of discovery, a rope was threaded through this hole. Cf.: Fig. 15.

**No. 30.** Bowl/beaker with direct rim and ledged base. See Fig. 14.

Inventory file number: F. 6470. Finding place: sector J6, level 2.70–3.2 m above the temple pavement. Nile silt B2. Pot thrown. Base scraped. Surface uncoated. Colour: 10 R 6/6 light red. Hard. Complete. Rim diam.: 17 cm. Ht.: 9.6 cm. Base diam.: 9 cm.

<sup>55</sup> MYŚLIWIEC, *Keramik und Kleinfunde*, p. 56, Nr. 352–354.

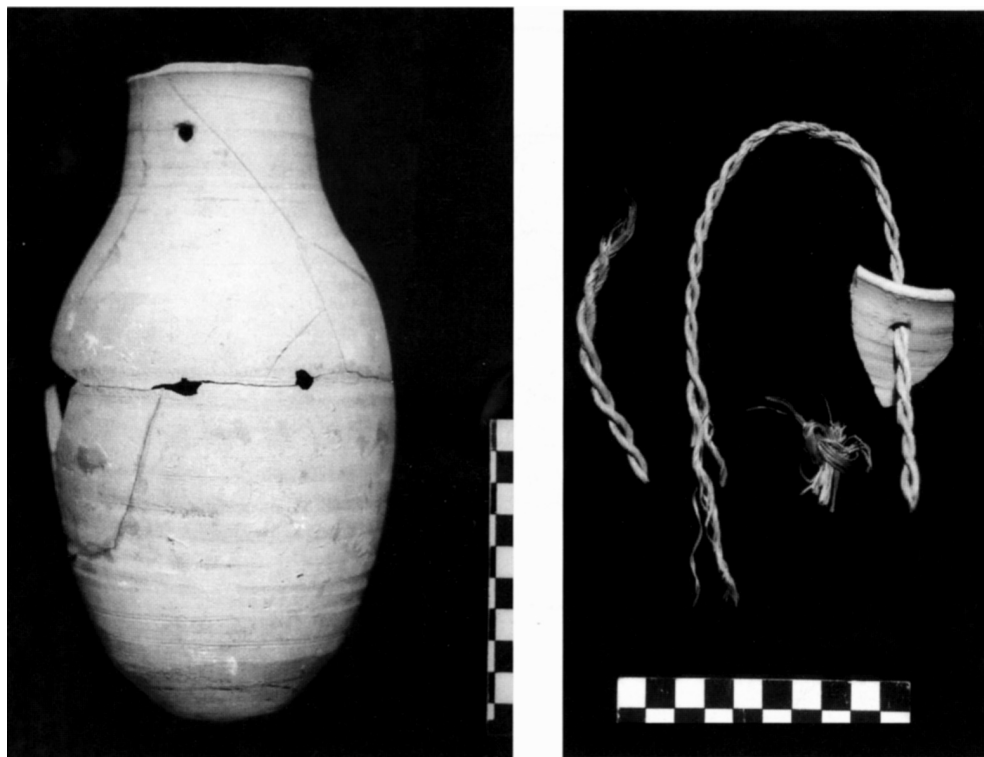
<sup>56</sup> PETRIE, *Qurneh*, Pl. 51, Nos. 807, 808, 810; *Bulletin of MMA* 1992, Sect. II, 43, Fig. 34, 1924, Sect. II, 28, Fig. 30, 1928, Sect. II, 25, Fig. 30, 1932, Sect. II, 36, Fig. 40 with magical text.

<sup>57</sup> FEUCHT, *Nefersecheru*, p. 133, Nr. 49.

<sup>58</sup> LECUYOT, *Céramique du Ramesseum*, p. 107, fig 3a.

<sup>59</sup> DO. ARNOLD, 1966, p. 90, Pl. XX d, K. 514.

<sup>60</sup> P. FRENCH, *Late Dynastic Pottery from the Berlin/Hannover Excavations at Saqqara*, 1986, *MDAIK* 44, 1988, No. 11, p. 83.



15. Vessel No. 29. Note the rope.

**No. 31 and No. 32.**<sup>61</sup> Bowls/beakers with direct rim and ledged base. See Fig. 16. and Fig. 17.

Inventory file number of No. 31 F. 6568, No. 32 F. 6569. Finding place: sector H4, in front of the entrance to Tomb II.<sup>62</sup> Nile silt B2. Pot thrown. Base scraped. Surface uncoated. Colour: 10 R 5/6 red. Hard. Complete. Rim diam.: 16–18.5 cm. Ht.: 8.4–9 cm. Base diam.: 9 cm.

Charcoal inside the pots.

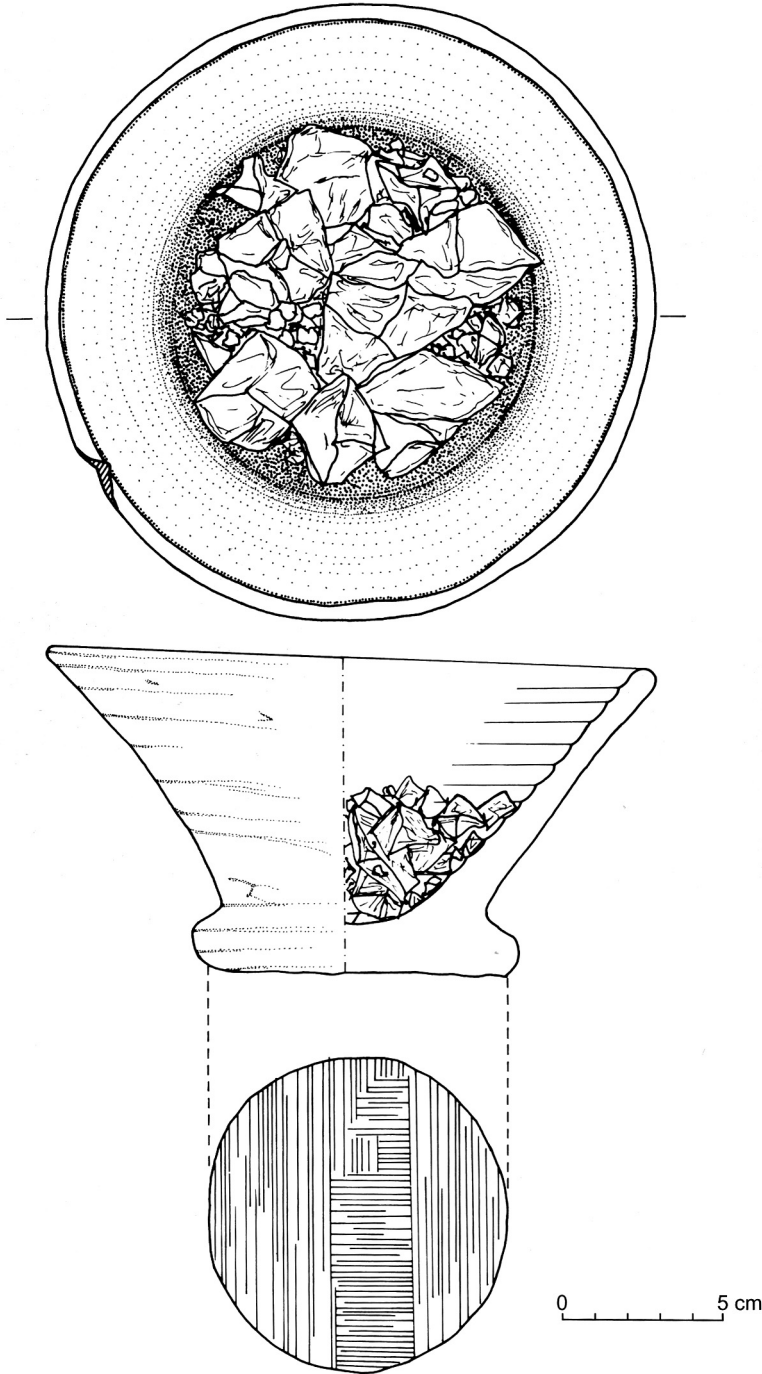
Parallels to Nos. 30–32: pot made of “pâte marneuse” dated to the Third Intermediate Period necropolis in the Ramesseum,<sup>63</sup> pot from the tomb of Amonmose (TT 373),<sup>64</sup> pot of

<sup>61</sup> Since the pots are similar only No. 31 was drawn.

<sup>62</sup> J. LIPÍŃSKA, A list of Objects Found at Deir el-Bahari in the Area of the Temple of Tuthmosis III. IVth Season of Excavations 1964/1965, *ASAE LX*, 1968, p. 52.

<sup>63</sup> G. LECUYOT, *Céramique du Ramesseum*, p. 106, fig. 2 n.

<sup>64</sup> SEYFRIED, Amonmose, 312, Fig. 189.



30

16. Vessel No. 31. Late Period, probably late 25th or early 26th Dynasty. Note charcoal inside the pot.



31

32

17. Vessels No. 31 and No. 32. Late Period, probably late 25th or early 26th Dynasty. Note charcoal inside the pots.

this type described as typical of Upper Egypt in 400–250 B.C. from El-Kab,<sup>65</sup> pots made of Silt fabric LPS2 or LPS3, uncoated, dated to the Late Period.<sup>66</sup> Note that NR 127 has burn marks around the rim and traces of a black resinous substance adhering to the rim and on the exterior surface from Theban Tombs (TT Nos. 294, 253 and 254),<sup>67</sup> pots Gournet

<sup>65</sup> HENDRICKX and HUYGE, *Tombes rupestres*, pp. 39 f., fig. 5, n° P. 214.

<sup>66</sup> ROSE, *The Pottery*, p. 172, Pl. 68, Nos. 126–129.

<sup>67</sup> *Ibid.*, p. 176.

Mar'ei,<sup>68</sup> pots dated to the 22nd Dynasty from Gurna,<sup>69</sup> and pot made of Nile clay dated to the early Saite Period from Sheikh Abd el-Gurna (TT 87).<sup>70</sup>

## DISCUSSION

There are six vessels or sherds dated to the middle of Eighteenth Dynasty. Nos. 1–5 with Brown and Red Decoration represent style typical of the Tuthmoside Period.<sup>71</sup> One supposes that the decoration was adopted during the early Eighteenth Dynasty from the Syro-Palestine or Cyprus bichrome pottery.<sup>72</sup> The sherds with “dots decoration” presented in this article, No. 3 and No. 4, were probably parts of ovoid jars with direct rims and rounded bases. The decoration on this type of jars was usually applied where body the diameter body was the biggest (shoulder), or on the neck, where it accentuated the pot's shape. Sometimes the lower part of the pot or the upper part directly under the rim, was painted as well. The ovoid jars with a direct rims and rounded bases were popular during the reigns of Hatshepsut and Tuthmosis III.<sup>73</sup> Well stratified close parallels from the temple of Hatshepsut at Deir el-Bahari and the settlement at Tell el-Da'ba confirm this dating.

The rims No. 1 with band decoration (black and red bands) and No. 2 (brown and yellow bands) can belong to tall, necked jars with direct rims and rounded bases. The central part of bodies could have been painted with some naturalistic motifs<sup>74</sup> typical of the middle Eighteenth Dynasty, and especially of the reign of Tuthmosis III.<sup>75</sup> No. 5 and No. 6 (with rolled rim) seem to belong to the same group of tall jars. All vessels represent luxury wares of the middle Eighteenth Dynasty.

Bowls (No. 7, No. 8), “drinking cups” (No. 9, No. 10) and plate (No. 11) appear difficult to date without an archaeological context, in view of the popularity of this form e.g. drinking cups, which started being manufactured already in the late Second Intermediate Period and which remained in common use throughout the Eighteen Dynasty. Vessel No. 7 is too fragmentary for any conclusion to be drawn about it. No. 8, on the other hand, is known from early Eighteenth Dynasty context, cf. parallel from the Dra Abu el-Naga, but the presence of painting pigments in both our vessels is suggestive of secondary use. There is no way to know whether the pigments were used in temple decoration (either Hatshepsut or Tuthmosis) or to make some repairs later in post-Amarna times. They could have also

<sup>68</sup> G. CASTEL, D. MEEKS, *Deir el-Médineh 1970*, Gournet Mar'ei sud, FIFAO XII/2, Le Caire 1980, pl. 18 a and b (Nos. 12 and 34).

<sup>69</sup> A. L. KELLEY, *The Pottery of Ancient Egypt. Dynasty I to Roman Times*, Royal Ontario Museum, Toronto, 1976 [= *Pottery of Anc. Eg.*], Pl. 81.1.

<sup>70</sup> ASTON, *SAGA* 13, p. 50, Pl. 157.2.

<sup>71</sup> BOURRIAU, *Introduction*, pp. 99–100.

<sup>72</sup> BOURRIAU, *Introduction*, p. 99; LOYRETTE, *Céramique*, p. 189; HOPE, *Innovation*, p. 109.

<sup>73</sup> C. A. HOPE, after HEIN, 'Ezbet Helmi-Tell el-Da'ba, p. 550, note No. 21.

<sup>74</sup> For details – see HOPE, *Innovation*.

<sup>75</sup> HOPE, *Innovation*, p. 109.

been used in the decoration of any one of the neighbouring tombs. Plate No. 11 with red painted rim, typical of the entire New Kingdom,<sup>76</sup> appears difficult to date as well.

The double vessel (?) No. 12 is an extraordinary find. Clumps of clay on the vessel surface suggest that two or more (?) pots of similar (?) shape could have been joined together. Similar sets consisting of two or more roughly manufactured vessels were known since at least Eighteenth Dynasty.<sup>77</sup> It is not to be excluded that they were used for cultic practice, e.g. liquid offerings (part of *nmst* vessel?). It is possible also that the pot was a votive offering to Hathor, who was worshipped at Deir el-Bahari from the First Intermediate Period or even earlier.<sup>78</sup>

The vessels No. 13 and No. 14 represent Blue Painted pottery that was produced from the time of Tuthmosis IV<sup>79</sup> until the Nineteenth Dynasty.<sup>80</sup>

As far as the shape of Blue Painted vessels is concerned, vessel No. 13 is quite rare. The said pot had probably rounded base and probably tall neck. Pots of similar, but not exactly the same shape come from East Karnak, Sedment and Amarna (now in Amarna and Paris, all of them with Blue Painted decoration. The decoration is of rare type as well. There are only few parallels. The pots from Karnak, Sedment and Deir el-Bahari even have a similar decoration scheme, which consists of a central panel framed by horizontal bands. The said panels are decorated with growing plants. The main difference is that on the vessels from Karnak and Sedment the plants (lotus) grow in clumps, while on the pot from Deir el-Bahari – each is separate. The first scheme seems to be more popular, the second is rare.<sup>81</sup> There are only a few examples of pots known where the plants (papyrus or lotus) are depicted separately, e.g.:

1) lotus:

- faience amphora from Deir el-Bahari with a frieze of lotus flowers and buds on tall straight stems about the middle of the body,<sup>82</sup>
- funnel necked jar from Amarna with a frieze of open lotus flowers around the neck deposited in the Frankfurt' Museum (No. 12570),<sup>83</sup>
- three handlets jar from the temple of Seti I (Gurna) with a frieze of lotus flowers flanked by buds around the vessel about the middle of the body,<sup>84</sup>
- vessel from Saqqara with a frieze of tall lotus flowers and short buds painted separately,<sup>85</sup>

<sup>76</sup> NAGÉL, *La céramique*, Typ X, Pls. VII–VIII, pp. 168–169.

<sup>77</sup> “rough double or triple vases ... joined together at the neck and base” cf.: HALL in NAVILLE, *The XIth Dynasty Temple*, p. 15.

<sup>78</sup> G. PINCH, *Votive Offering to Hathor*, Oxford 1993, p. 4; S. ALLAM, *Beiträge zum Hathorkult*, MÄS 4, München 1963, p. 58.

<sup>79</sup> GUIDOTTI, *Ceramica dipinta*, p. 105.

<sup>80</sup> ARNOLD, BOURRIAU, *Introduction*, p.100.

<sup>81</sup> Cf.: HOPE, *Blue-Painted from Amarna*, Appendix 1, pp. 66–84.

<sup>82</sup> J. AKSAMIT, *Egyptian faience vessels from the temple of Tuthmosis III at Deir el-Bahari*, *CCE* 4, Le Caire 1996, pp. 7–8, Pl. V.

<sup>83</sup> HOPE, *Blue-Painted from Amarna*, p. 39, Pl. 5d.

<sup>84</sup> K. MYŚLIWIEC, *Dreihenklige Gefäße in Ägypten*, *MDAIK* 45, 1989, pp. 239–240, Abb. 1, Taf. 26.

<sup>85</sup> N. KANAWATI, *An elaborated Blue-Painted Jar from Saqqara*, *GM* 105, 1988, pp. 41–44.

- jar from Munich' Museum (No. 1823) with papyrus and lotus flowers growing separately,<sup>86</sup>
- 2) with papyrus:
- vessel No. 7 from Deir el-Bahari,
  - vessel from the Louvre (No. E11.265, possibly from Amarna) with a frieze of widely spaced papyrus umbels and buds, some on vertical culms of different height and some on bent culms,
  - vessel from Giza, deposited in the Cairo Museum (JE 48180) with a frieze of papyrus umbels alternating with buds.<sup>87</sup>

Equally interesting is vessel no. 14. As only a small fragment is preserved, it may be reconstructed in a number of ways. It could belong to the lower part of a wine jar, as suggested by the decoration. Similar motifs are depicted on a high (94.5 cm) *hs*-shaped vessel of unknown provenance held in the University Museum in Philadelphia (E14369 a-b).<sup>88</sup> The lower part of the vessel bears a decoration of upward tapering petals of an open blue lotus flower. However, the body diameter, based on the curve of the preserved fragment, is too big, making this reconstruction less plausible.

Another assumption is to consider the sherd upside-down and to reconstruct it as part of a lid. This is supported by the broad opening of the vessel and concave contour of the preserved fragment. On the other hand, the ornamental motifs seem too large for this kind of pottery, especially in view of the fact that the corresponding elements of the decoration on the lid of the jar mentioned above are much smaller.

The third suggestion, not as attractive as the two previous ones, seems to be the most plausible. It assumes that the said sherd is part of a funnel-necked jar like this one from the Cairo Museum (JE 55421) or from British Museum (BM 56841).<sup>89</sup>

Both vessels with Blue Painted decoration No. 13 and No. 14 seem to be products of a late Eighteenth or early Nineteenth Dynasty Upper Egyptian pottery workshop, possibly Malkata.

Vessel No. 15 with a very rare type of decoration, i.e. Blue Painted on Red Slipped represents the fourth phase. The vessel has been reconstructed putatively based on the shape and decoration of the sherds; however, a more biconical shape like that of the pot from Chicago cannot be excluded.<sup>90</sup>

Two other sherds, No. 16 and No. 17, decorated probably with Black Hatched Decoration are characteristic for the Twentieth Dynasty pottery.<sup>91</sup> According to zoned section of

<sup>86</sup> Meisterwerke altägyptischer Keramik. 5000 Jahre Kunst und Kunsthandwerk aus Ton und Fayence. Exhibition in Höhr-Grenzhausen, Rastal-Haus, 16. September bis 30. November 1978, 1978, pp. 156–157, Kat. Nr. 239.

<sup>87</sup> HOPE, *Some Memphite*, Fig. 10–11.

<sup>88</sup> *Egypt's Golden Age*, 1982, p. 90–91, No. 71.

<sup>89</sup> HOPE, *Blue-Painted from Amarna*, Pl. 7 c-d, Pl. 8 a-c.

<sup>90</sup> *Egypt's Golden Age*, p. 96–97.

<sup>91</sup> ASTON, *Innovation*, p. 74. The sherds do not bear the "classical" type of decoration as there are no vertical "hatched" lines; it is possible, however, that these motifs were present in the upper or lower part of the shoulder.

the fabric of the vessel No. 16, it seems to be import from the Western Oases, probably Dakhla. Vessel No. 17 is rather product of Upper Egypt, since the pot was made from Marl clay A4.

“Beer jar” No. 18 looks Ramesside, but a date in the Third Intermediate Period is not to be excluded.

Vessels Nos. 20, 24, 25, 26 seem to be typical of the Third Intermediate Period, Nos. 21, 22 and 23 probably too. Dating of the vessel No. 19 is problematic. There are no well dated parallels, but I would be inclined to the Third Intermediate Period as well.

The type of bowls with ledged base (F. 6569 and F. 6470) seem quite common in the Third Intermediate Period through the Ptolemaic,<sup>92</sup> but H. Jacquet-Gordon dates this type to the 26th Dynasty.<sup>93</sup> These vessels were probably closely connected with some cult activities in temples and tombs, where were they used as censers. K.J. Seyfried, basing his conclusions on finds from the tomb of Amonmose (TT 373), suggested that they were used in the cult of the dead. Vessels No. 31 and No. 32 with charcoal inside, found in front of Tomb II, seem to confirm this theory. These pots, connected with secondary burial activities at the temple, belong to the late 25th or early 26th Dynasty. This may be the general date of Tomb II and probably Tomb I as well.<sup>94</sup>

Pot No. 27 for embalming remains bears a pre-firing pot-mark. There are identical vessels from Gurna, pot-mark included.<sup>95</sup> This may suggest that the vessels come from the same workshop, which used a three-stroke-pot-mark to stamp its products.

The majority of the pottery described in this article represents a ceramic horizon typical of the period, but there are some pots that are of rare shape or decoration. The pottery confirms that the temple remained in use until the late New Kingdom,<sup>96</sup> and that Rock Tombs II, and probably Rock Tomb I as well, were installed above the temple in the late 25th or early 26th Dynasty. The vessels were mainly of everyday use (drinking cups, beer jar, plates). However, there are also some luxurious (vessel with red and brown or blue painted decoration) and cultic (double-vessel, jar for embalming remains and censers) vessels, as well as reused ones (tool and painter’s utensil.)

The activity of Ramesside stone cutters left the stratigraphy of the temple of Tuthmosis III too disturbed for the original provenance of the pottery to be established with any certainty.<sup>97</sup> The fragments discussed above come from the various sectors of the main temple platform. Some of them, like vessel No. 13, were found scattered in different sectors and levels. It seems probable that a part of the pottery assemblage might have been previously deposited in other places at Deir el-Bahari.

<sup>92</sup> BÉOUT, GABOLDE *et al.*, Fouilles, p.169.

<sup>93</sup> After: ROSE, Pottery, p.176.

<sup>94</sup> L. DĄBROWSKI, Preliminary Report on the Reconstruction Works of Hatshepsut’s Temple at Deir el-Bahari During the Seasons 1962/ 63 and 1963/ 64, *ASAE* LX, 1968, pp. 135–137.

<sup>95</sup> See parallels.

<sup>96</sup> J. LIPÍŃSKA, Names and History of the Sanctuaries built by Tuthmosis III at Deir el-Bahari, *JEA* 53, 1967, p. 30.

<sup>97</sup> J. LIPÍŃSKA, The Temple of Tuthmosis III. Architecture. Deir el-Bahari II, Varsovie 1977, p. 10.

As only complete pots and single sherds were stored, the pottery under discussion makes for only a small part of the ceramics found in the area of the New Kingdom temples at Deir el-Bahari excavated by the Polish-Egyptian Missions. To make the picture more complete, one should mention former publications concerning pottery and faience vessels, e.g.: pottery from the Hatshepsut temple,<sup>98</sup> faience vessels<sup>99</sup> and the pottery from the foundation deposit in the temple of Tuthmosis III.<sup>100</sup> There are still other pots from the foundation deposit of the temple of Tuthmosis III and other pots in Bab el-Gusus,<sup>101</sup> not accessible at the moment, mainly pots for embalming remains, that have not been published as yet.<sup>102</sup>

---

<sup>98</sup> Z. E. SZAFRAŃSKI, Pottery from the Time of Construction, *DE* 22, 1992, pp. 53–60; Id., *PAM* VI, 1995, 63–65; M. DASZKIEWICZ, J. JELITO, Preliminary Report on Thin-section Analysis of Pottery from the Trial Trenches in the Hatshepsut Temple at Deir el-Bahari, *DE* 22, 1992, pp. 61–78.

<sup>99</sup> AKSAMIT, Egyptian faience vessels from the temple of Tuthmosis III at Deir el-Bahari, *CCE* 4, Le Caire 1996, pp. 1–17.

<sup>100</sup> Z. E. SZAFRAŃSKI, Foundation Pottery Deposit Found at the Djoser-akhet Platform (Part I). The Temple of Tuthmosis III at Deir el-Bahari, in: Essays in honour of Prof. Dr. Jadwiga Lipińska, *WES* I, Warsaw 1997, pp. 53–64.

<sup>101</sup> Second cachette at Deir el-Bahari. *PM* I, pp. 630 f. J. LIPIŃSKA, Bab el-Gusus-cache-tomb of the Priests and Priestesses of Amen. *K. M. T.* 4, No. 4 (Winter 1993/94), pp. 48–59.

<sup>102</sup> I would like to thank Dr Joanna Aksamit for this information.

\* I would like to thank Professor Jadwiga Lipińska for entrusting me with the publication of the pottery from the temple of Tuthmosis III at Deir el-Bahari. I am grateful to Professor Karol Myśliwiec, who has studied this material and presented me with his documentation, and to Dr Joanna Aksamit for her kind assistance and discerning remarks during my work at Deir el-Bahari. Last but not least, I would like to thank Dr Zbigniew Szafranski, director of the Polish-Egyptian Restoration-Archaeological Mission at Deir el-Bahari, for inviting me to stay with the mission. My heartfelt thanks go to Dr David Aston for his remarks concerning the dating of this pottery. The Swedish Institute granted me a scholarship to study also this pottery at the Museum of Mediterranean and Near Eastern Antiquities (Medelhavsmuseet) in Stockholm. Tack så mycket! Tomasz Górecki helped with the drawing of some of the pottery. All the pottery drawings have been inked by the author.